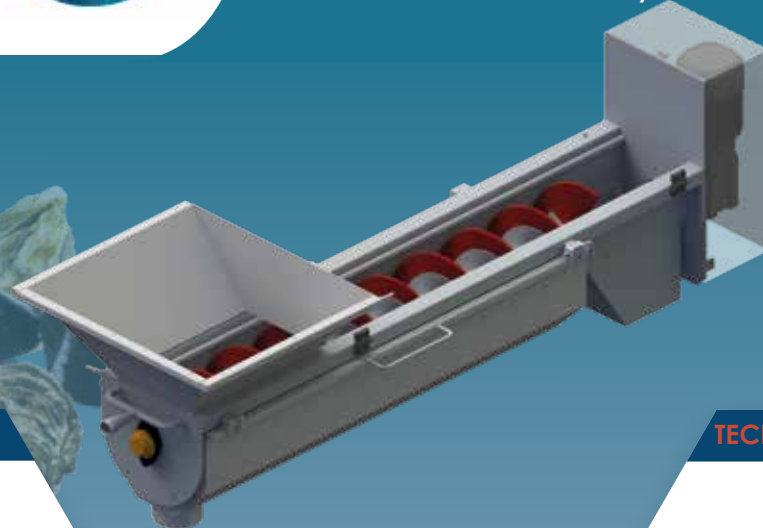


SINGLE OR DOUBLE SCREW

BLADE MUSSEL WASHING MACHINE

This machine effectively removes small mussels and wastes.



FEATURES



- Eliminates 60 to 70% percent of waste.
- Also available with a double screw for a higher rate.

TECHNICAL FEATURES



- Power supply: 220 V, single phase
- Power: 1.1 kW
- Electronic speed control

OPERATION



- Endless screw with speed control.
- Separates groups of mussels.
- Waste is removed by the durable rubber blades pushing the mussels upwards over the thick perforated grid, which also acts as pre-sorting.
- Placed between a separating machine and a scrubbing machine.

OUTPUT



- Up to 2 tonnes/hour with a single screw

SIZE



- Length: 2400 mm
- Width: 750 mm

MAINTENANCE



- The machine is robust and made entirely from stainless steel.
- Durable, detachable and interchangeable rubber blades.
- Easy access for cleaning and maintenance (e.g. changing the blades).

